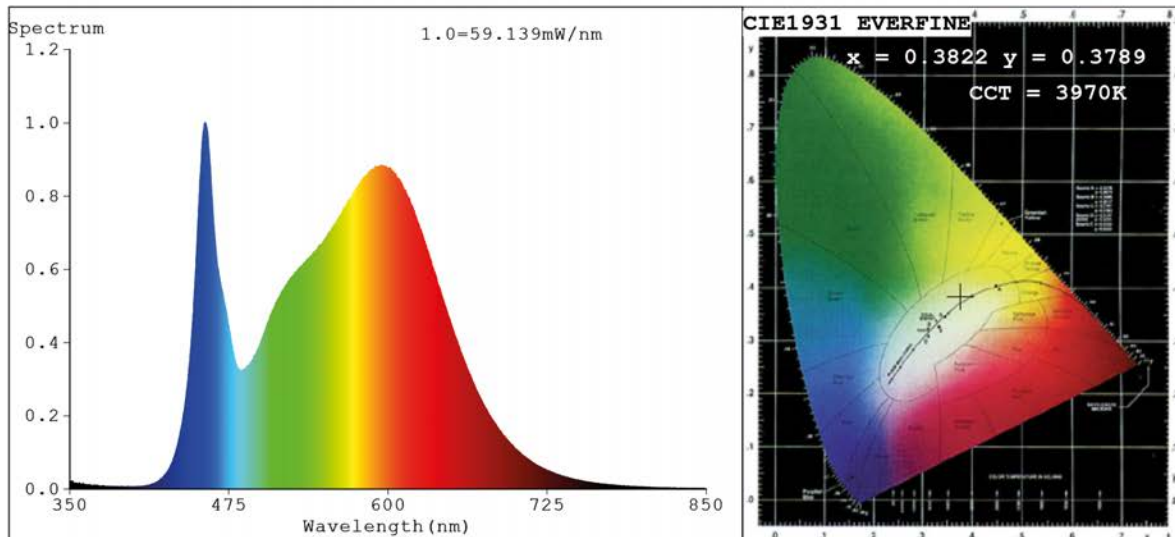


Spectrum Test Report



Color Parameters:

Chromaticity Coordinate: $x=0.3822$ $y=0.3789$ $u'=0.2254$ $v'=0.5028$
 CCT=3970K (Duv=0.0005) Dominant WL:Ld =578.9nm Purity=28.4%
 Ratio:R=18.6% G=77.3% B=4.1%;;Peak WL:Lp=456.7nm FWHM=24.8nm
 Render Index:Ra=83.8 CRI=77.8 TM30:Rf=81 Rg=93
 R1 =83 R2 =93 R3 =95 R4 =80 R5 =82 R6 =89 R7 =84
 R8 =64 R9 =11 R10=82 R11=79 R12=62 R13=86 R14=98 R15=77

Photo Parameters:

Flux = 2961 lm Eff. : 151.62 lm/W Fe = 9.058 W

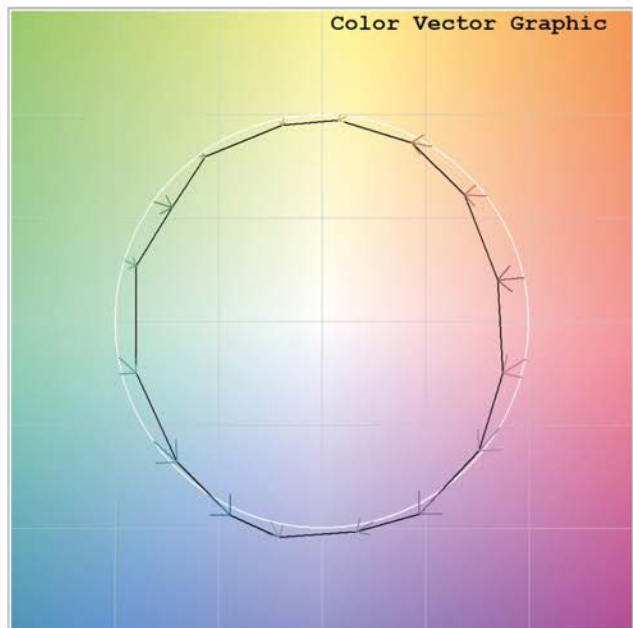
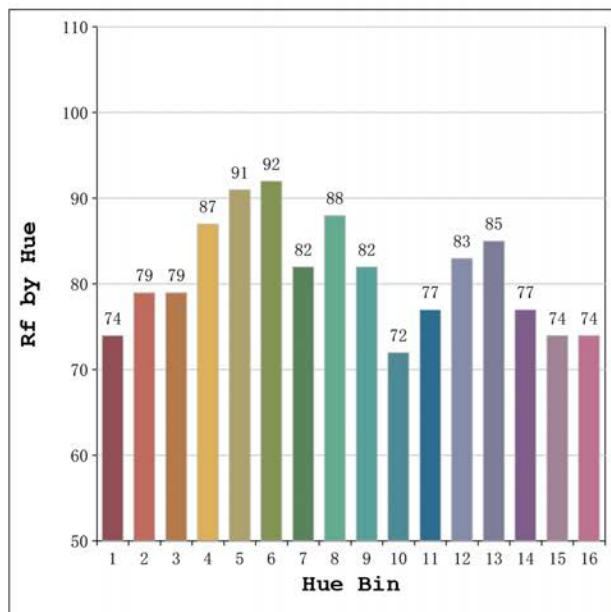
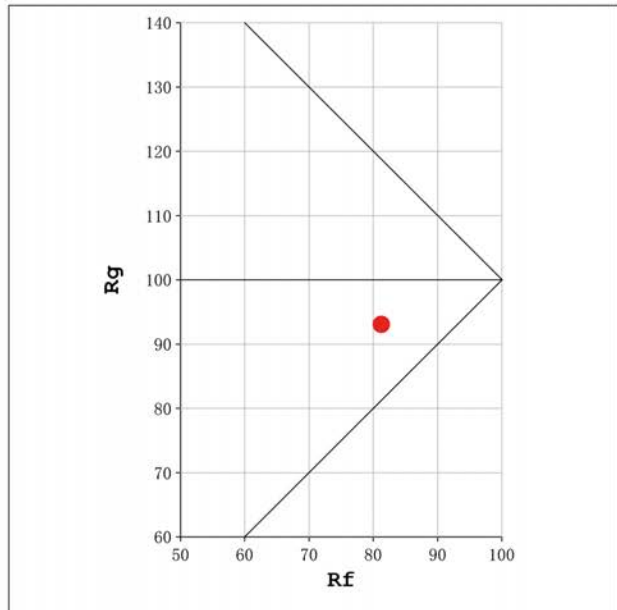
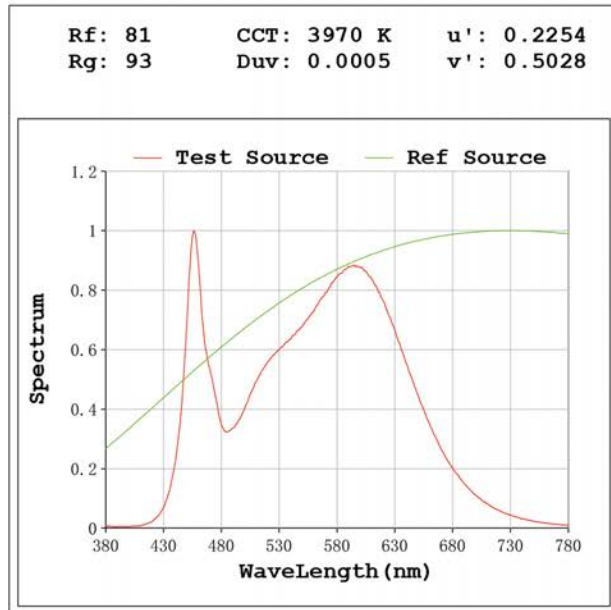
Electrical parameters:

V = 11.998 V I = 1.628 A P = 19.53 W PF = 1.000

Status: Integral T = 500 ms Ip = 53136 (81%)

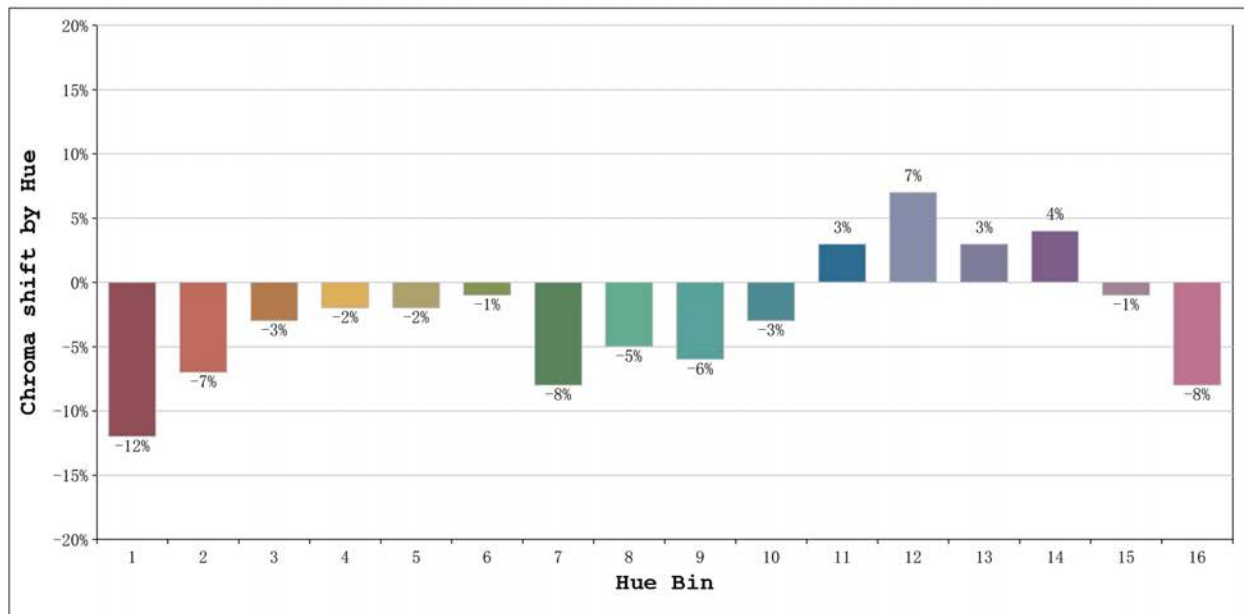
Model:Ecoled Benidorm 4000K
 Tester:Sergio Carneros
 Temperature:20Deg
 Manufacturer:Luz Negra

Number: 30.117
 Date:2025-06-17 09:54:53
 Humidity:50%
 Remarks:100cm de tira flexible



Model:Ecoled Benidorm 4000K
 Tester:Sergio Carneros
 Temperature:20Deg
 Manufacturer:Luz Negra

Number: 30.117
 Date:2025-06-17 09:54:53
 Humidity:50%
 Remarks:100cm de tira flexible



			Graphic shift(%)	
Hue Bin	Hue Angle	Rf	Chroma	Hue
1	0.0° - 22.5°	74	-12	1
2	22.5° - 45.0°	79	-7	6
3	45.0° - 67.5°	79	-3	9
4	67.5° - 90.0°	87	-2	4
5	90.0° - 112.5°	91	-2	1
6	112.5° - 135.0°	92	-1	-1
7	135.0° - 157.5°	82	-8	-2
8	157.5° - 180.0°	88	-5	1
9	180.0° - 202.5°	82	-6	9
10	202.5° - 225.0°	72	-3	15
11	225.0° - 247.5°	77	3	14
12	247.5° - 270.0°	83	7	5
13	270.0° - 292.5°	85	3	-8
14	292.5° - 315.0°	77	4	-15
15	315.0° - 337.5°	74	-1	-14
16	337.5° - 360.0°	74	-8	-7

Model:Ecoled Benidorm 4000K
 Tester:Sergio Carneros
 Temperature:20Deg
 Manufacturer:Luz Negra

Number: 30.117
 Date:2025-06-17 09:54:53
 Humidity:50%
 Remarks:100cm de tira flexible